


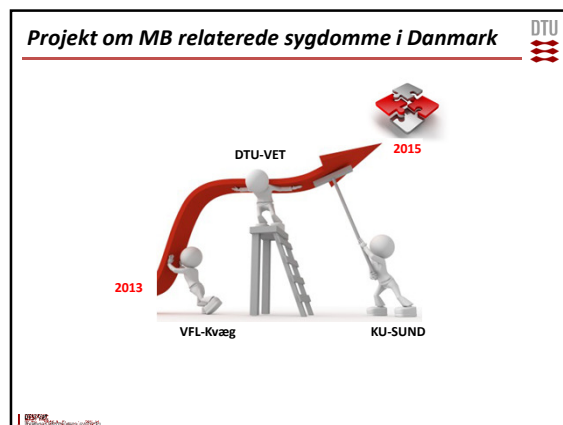
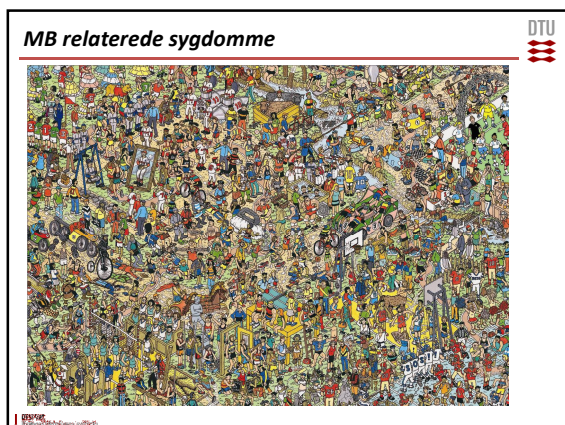
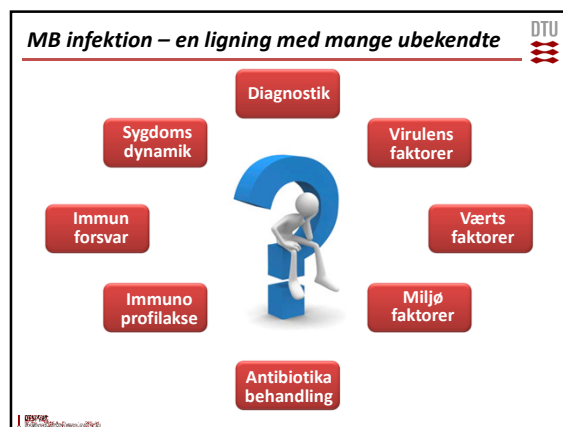
DTU

## *Mycoplasma bovis*

Årsagssammenhænge for klinisk sygdom i kvægbesætninger

Projekt  
2013-2015

Branko Kokotovic  
DTU-Veterinærinstituttet

DTU

### Molekylær karakterisering af MB

Hvad?  
Hvordan?  
Hvorfor?




### Struktur og funktion

DTU

### Genom sekvensering

*M. bovis* = 1.000.000 bogstaver = ca. 200 sider

DTU

### Genom analyser åbner for nye muligheder

DTU

### Resistensbestemmelse

DTU

### Funktionel genomics

DTU

### MB biomarkører

#### MALDI-TOF spektrometri

DTU

*For research use only, not for use in diagnostic procedures*

Figure 2. Schematic showing the sample preparation method for analysis and identification of bacteria using MALDI-TOF analysis as applied in the MALDI Biotyper (Bruker Daltonics). From Wolfgang Putsch, with permission.